



# INDUSTRIAL INTERNSHIP & CORPORATE TRAINING FRAMEWORK

## STRATEGIC PARTNERSHIP PROPOSAL

Bridging Academic Talent  
with Corporate Excellence.  
**Building Careers. Driving Growth.**



HUMAN RESOURCE  
OPERATIONS



MARKETING &  
BRAND ANALYTICS



FINANCIAL  
ACCOUNTING & MIS



GOVERNMENT  
REGISTERED  
MSME VALIDATED



INDUSTRY  
ALIGNED  
PRACTICAL LEARNING



PLACEMENT  
FOCUSED  
CAREERS POWERED



ACADEMIC  
PARTNERSHIPS  
FUTURE READY



GOVT MSME REG:  
UDYAM-JH-06-0079103



WWW.LEADQ.IN



# INDEX

Industrial Internship &  
Corporate Training Framework

01

About Us & Overview



02

Why Choose Us



03

Our Mission,  
Vision & Ethics



04

Our Team



05

Program Architecture



EMPOWER



EDUCATE



ELEVATE

Building Skills.  
Creating Impact.  
Shaping Futures.



# WORK TOGETHER & MAKE A BEST BUSINESS

## About Us!

LeadQ is a training and consulting firm committed to building future-ready talent and helping organizations hire with confidence. We work at the intersection of skills, performance, and people, enabling individuals and businesses to grow in a fast-evolving professional landscape.

Our training solutions span Technical, Non-Technical, and Engineering domains, designed to bridge the gap between academic knowledge and real-world industry expectations. Whether it's fresh graduates, early-career professionals, or experienced teams, our programs focus on practical learning, hands-on exposure, and measurable outcomes.

Beyond training, LeadQ partners with organizations to support their end-to-end recruitment needs. We understand that hiring the right talent is not just about resumes—it's about alignment, capability, and long-term value.

## Why Choose Us?



### Internship-First Approach

We offer IT & Non-IT internships that provide real-world exposure, helping students and professionals turn learning into experience and opportunities.



### Industry-Relevant Training

Our programs are crafted with industry insights, ensuring you gain skills that are in-demand and future-ready.



### Placement & Career Support

From resume building to interview preparation, we support you at every step to help you land the right opportunity.



### End-to-End Hiring Solutions

We help organizations find, assess, and onboard the right talent—aligned with their goals and culture.



### Expert-Led & Result-Driven

Our experienced mentors, practical approach, and focus on outcomes ensure measurable growth for individuals and businesses alike.

# 01

## OUR MISSION

To systematically elevate, upskill, and place more than **100,000+** business management and core operations students by 2030 through practical field models, intensive workplace simulations, and data-driven corporate relationship loops.



# 02

## OUR VISION

To serve as the definitive standard and most efficient technical bridge connecting academic talent hubs with modern market structures, producing highly optimized professional pools capable of scaling enterprise ecosystems globally from day one.



# 03

## OUR ETHICS



- ✓ **Integrity First**  
We do what's right, always.
- ✓ **Client Success**  
Your success is our purpose.
- ✓ **Transparency**  
We communicate openly and honestly.
- ✓ **Innovation**  
We embrace new ideas to create impact.
- ✓ **Accountability**  
We own our actions and deliver on promises.
- ✓ **Respect & Inclusion**  
We value people, diversity, and collaboration.

 PRACTICAL LEARNING

 INDUSTRY CONNECT

 REAL-WORLD IMPACT

  
**EMPOWER  
EDUCATE  
ELEVATE**

Building Future-Ready  
Professionals Today.

# OUR TEAM

WE HAVE OUR  
DEDICATED TEAM OF  
EXPERIENCED TRAINER  
AND PROFESSIONALS  
EDUCATORS

*Empowering Minds, Building Futures,  
Creating Real-World Impact.*



## EXPERT TRAINERS

Industry experts with real-world experience and deep knowledge.



## PRACTICAL APPROACH

Hands-on training methodologies for real-time learning.



## STUDENT FOCUSED

Personalized attention to nurture skills and build confidence.



## CONTINUOUS GROWTH

We evolve constantly to deliver cutting-edge education.

## OUR STRENGTH

Our team is our greatest asset. A blend of educators, mentors, professionals and innovators working together to transform knowledge into opportunity.



## WHAT WE BELIEVE

We believe in creating an environment where curiosity is encouraged, skills are sharpened, and every learner is empowered to achieve excellence.



## TOGETHER WE ACHIEVE MORE



### Experienced & Qualified

Our trainers bring years of industry and teaching experience.



### Innovative & Passionate

We bring energy, creativity and passion to every session.



### Mentors & Guides

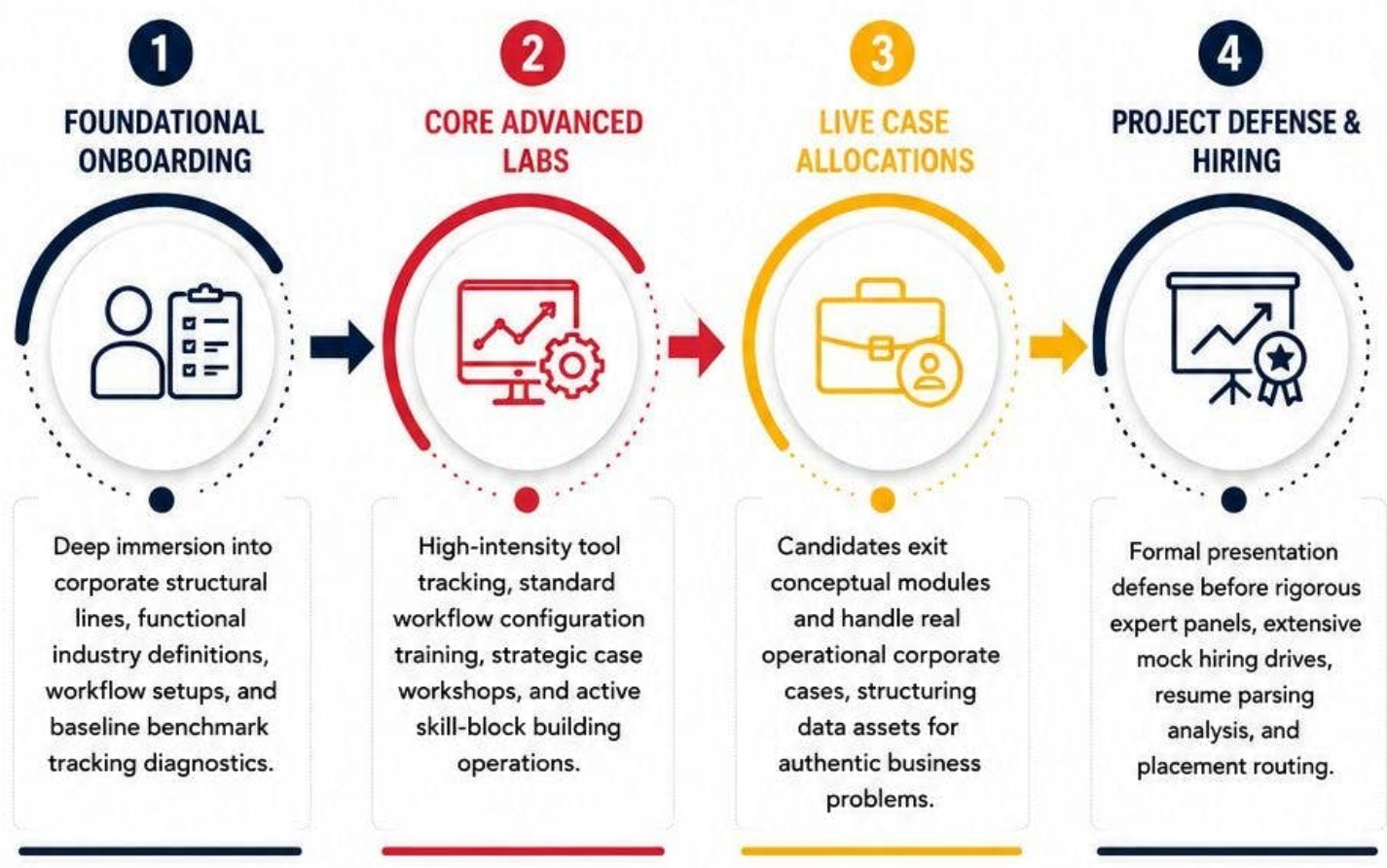
We don't just teach, we mentor and shape future professionals.



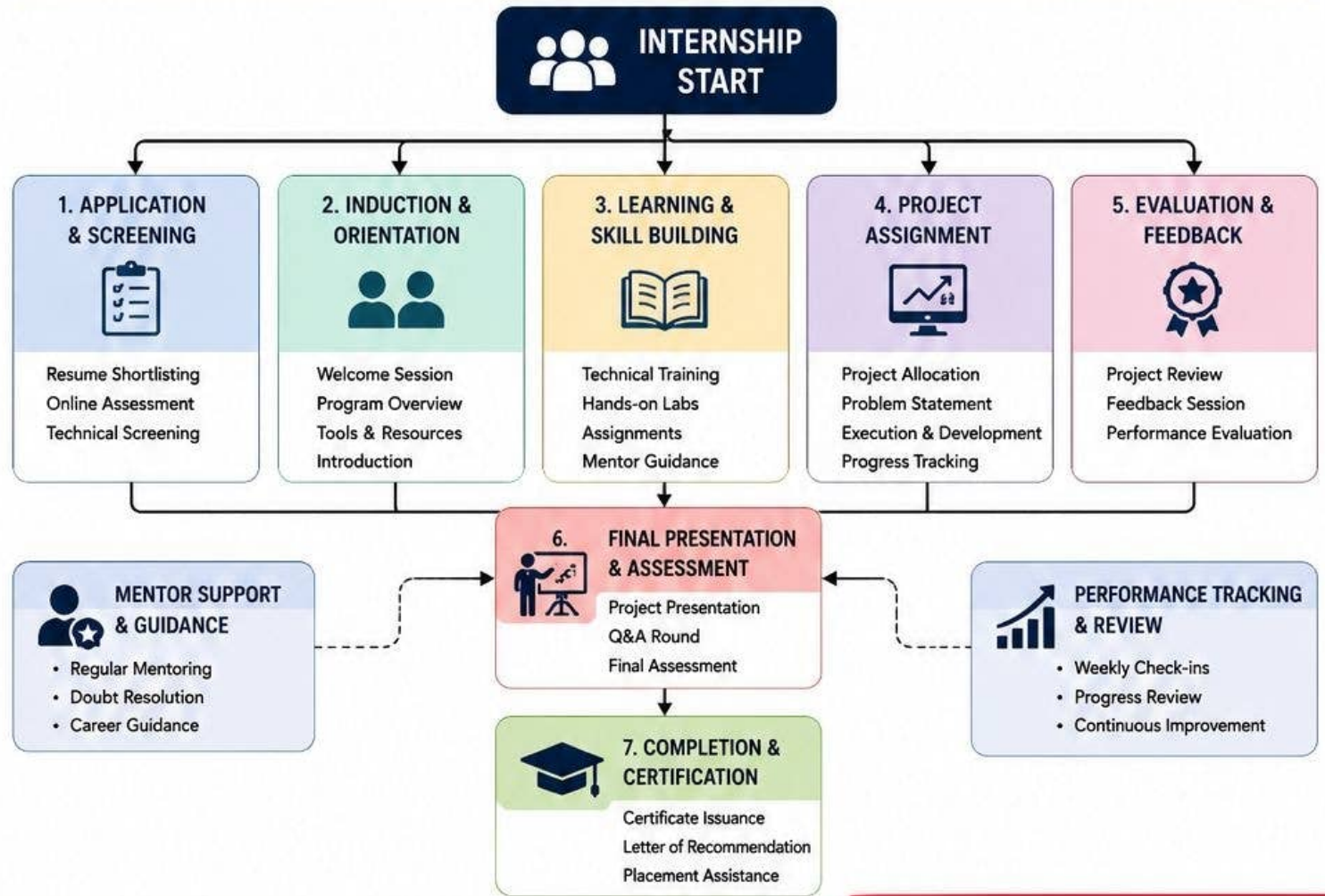
### Committed to Excellence

We are dedicated to delivering the highest quality education every time.

# OUR PROGRAM ARCHITECTURE



## FLOW CHART – INTERNSHIP STRUCTURE



OUR EXPERTISE

# MANAGEMENT VERTICALS

End-to-end management solutions designed to optimize operations, drive growth and build resilient organizations.



## Business Management (Core Track)

Comprehensive structural study on corporate administrative architecture, mid-tier governance paradigms, organizational decision matrix formulation, crisis response planning configurations, and cross-functional corporate planning operations.

01



## Human Resource Management

Deep immersion into employee lifecycles: strategic talent acquisition parameters, compensation metrics, active compliance laws, payroll computing automation, performance mapping, and labor relations.

02



## Financial Management

Applied execution tracks covering corporate bookkeeping structures, capital budgeting matrix modeling, operational cost accounting loops, direct/indirect taxation applications, GST ledger filing, and financial analysis.

03



## Supply Chain & Logistics Management

Analysis of real-world logistics: multi-echelon inventory optimization maps, demand forecasting models, freight route management, vendor relationship mechanics, and warehousing resource scheduling.

04



## Entrepreneurship & Start-up Management

Practical guide to building ventures: customer validation structures, business model design metrics, product unit economic accounting, capital pitch-deck engineering, and rapid execution frameworks.

05



## Operations & Digital Marketing Sync

Combined training on continuous process map optimization workflows alongside modern user acquisition campaign engines, organic search authority engineering (SEO tracking), and performance analytics attribution.

06



Industry Focused  
Curriculum



Expert-Led  
Training



Practical & Real  
World Approach



Career & Business  
Growth

# OUR IT EXPERTISE

High-performance technology solutions engineered to build scalable, secure, and future-ready digital products.



Scalable Solutions



Secure & Reliable



Innovation Driven



Industry Focused

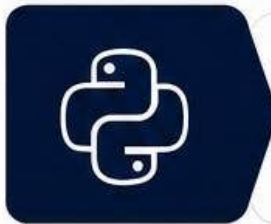


## </> TECHNICAL ENGINEERING



### MERN Stack Development (Full Stack Javascript)

» End-to-end development using MongoDB, Express.js, React.js, and Node.js. We build responsive, scalable, and secure web applications with modern UI/UX, RESTful APIs, and optimized performance.



### Python Full Stack Development

» Full stack solutions using Python, Django/Flask, PostgreSQL, and modern JavaScript frameworks. We deliver robust, secure, and maintainable applications tailored to business needs.



### Java Full Stack Development

» Enterprise-grade applications using Java, Spring Boot, Hibernate, and modern front-end frameworks. We build scalable, high-performing solutions with strong architecture and clean code.



### Front-End Development

» Creating intuitive, dynamic, and responsive user interfaces using React.js, Next.js, and modern CSS frameworks. We focus on performance, accessibility, and seamless user experience.



### TECHNICAL LABORATORY CONFIGURATIONS

Every engineer works in a real-world like environment with industry-standard configurations, advanced tools, and isolated testing to ensure practical exposure and enterprise-level development quality.



Agile Development



Quality Assurance



Continuous Integration



Cloud Ready



Expert Team

**LEADQ**  
training | placement | consulting

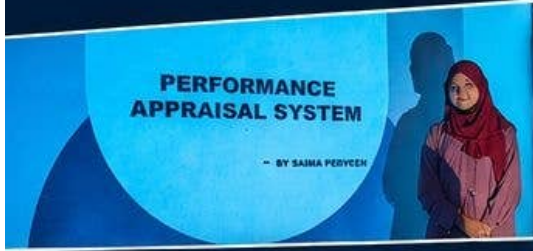
# PROFESSIONAL DEVELOPMENT SESSIONS AT LEADQ



**KRA - COMPETITOR DEEP ANALYSIS**

SHEIKH SHEIN	PALMOMAKS PALMOMAKS.COM	MEJURI
<ul style="list-style-type: none"> <li>Price range: 100-200</li> <li>Target audience: Gen Z, Millennials</li> <li>Key features: Affordable, trendy</li> </ul>	<ul style="list-style-type: none"> <li>Price range: 150-300</li> <li>Target audience: Millennials, Gen X</li> <li>Key features: Quality, variety</li> </ul>	<ul style="list-style-type: none"> <li>Price range: 50-150</li> <li>Target audience: Gen Z, Millennials</li> <li>Key features: Affordable, trendy</li> </ul>

- PRACTICE**  
Real-time presentation practice sessions.
- IMPROVE**  
Constructive feedback for continuous growth.
- PERFORM**  
Build confidence and communication skills.
- PREPARE**  
Get ready for real-world opportunities.



DEVELOP. GROW. SUCCEED.

- Better Communication
- Stronger Confidence
- Leadership Skills
- Presentation Excellence
- Career Advancement
- Real-World Readiness

# PARTNERING TODAY. BUILDING TOMORROW.

LeadQ is committed to transforming academic potential into industry-ready professionals. Together with your institution, we can build stronger competencies, better careers, and a future-ready workforce.



**STRONGER SKILLS.**  
Industry-Aligned Training



**BETTER CAREERS.**  
Real Skills. Real Opportunities.



**LASTING PARTNERSHIPS.**  
Building Value for Institutions  
& Industry.



**NATION BUILDING.**  
Empowering Youth.  
Powering Growth.



TRAINING | PLACEMENT | CONSULTING

“

## OUR COMMITMENT



To bridge the gap between academic learning and corporate expectations through practical exposure, real-world training, and career enabling opportunities.

FOLLOW US



**INQUIRY LINES**  
+91 9031502227



**CORPORATE EMAIL**  
contactleadq@gmail.com



**HQ LOCATION**  
Sakchi, Jamshedpur, JH



**WEBSITE**  
www.leadq.in



GOVT MSME REG:  
UDYAM-JH-06-0079103



GOVERNMENT REGISTERED  
MSME VALIDATED